

evolution 1 – Third Party Panel Interface configuration

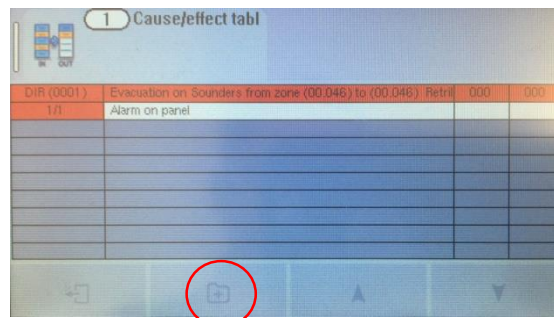
The Tech Alarm feature on the evolution 1 Panel can be used for non-alarm functions such as interfacing to a Third Party Fire Alarm Control Panel. The instructions set out below detail how to configure the Panel Local input to activate from the Relay Output of another panel.

The “Fire Relay” Output on the evolution 1 Panel can be used to activate the Third Party Panel/system.

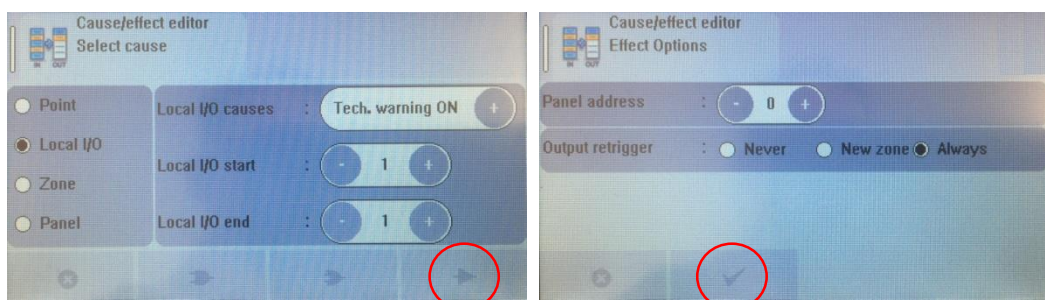
1. Select Local I/O from the main menu, then select the required Local input, e.g. Input 1 below.
2. Select "Tech. Alm." and "Enabled". Then click on the door symbol to exit and ensure you click ✓ when prompted to "Accept Changes".



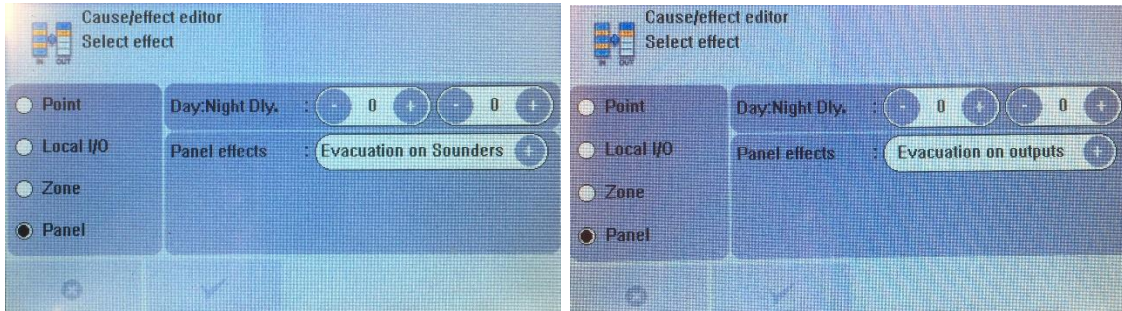
3. Select Cause & Effect from the Main Menu, then click on the file with + sign to add new line of C & E.



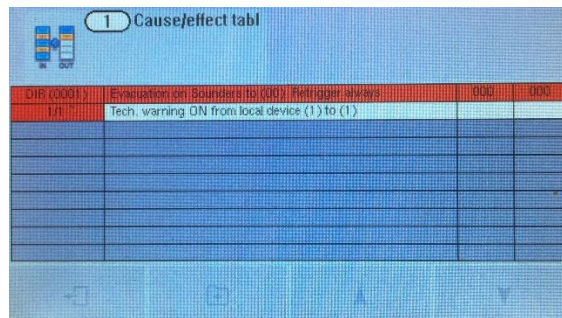
4. Select "Local I/O", then "Tech. warning ON" from the causes. Select Local I/O start & end required, 1 to 1 in this case. Click the triangle symbol to proceed.
5. For Output retrigger, select "Always". If multiple panels are Networked you can choose panel node address here for the effect, in this case the node is default "0" as it is a standalone panel. Click ✓ to accept.



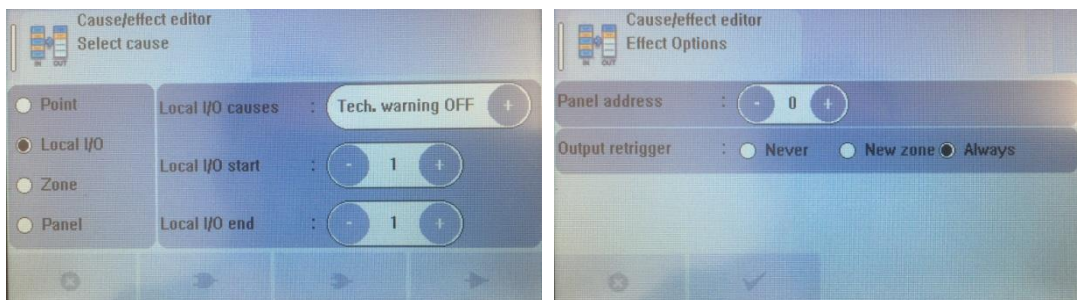
- For the effect, select Panel to apply the activation to output devices on the Panel.
- Select "Evacuation on Sounders", to activate only the Sounder devices, or select "Evacuation on Outputs", to activate all output devices including Relays. Click ✓ to accept. If the third party panel is in a separate building, You could choose "Warning on Sounders" if you only wanted to activate the Pulsed Tone.



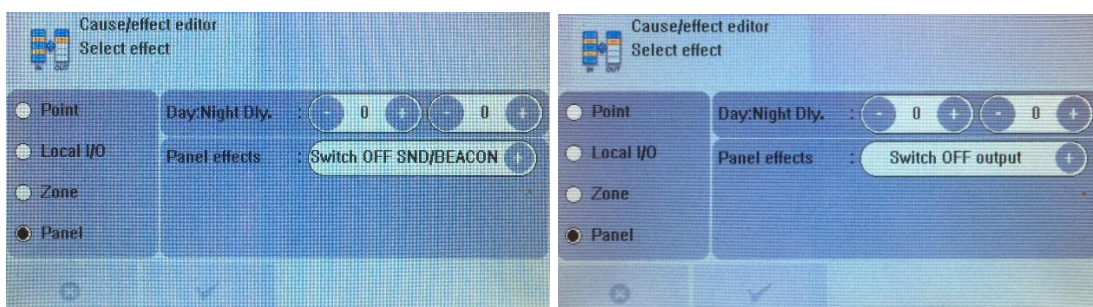
- Once again click on the file with + sign to add new line of C & E.



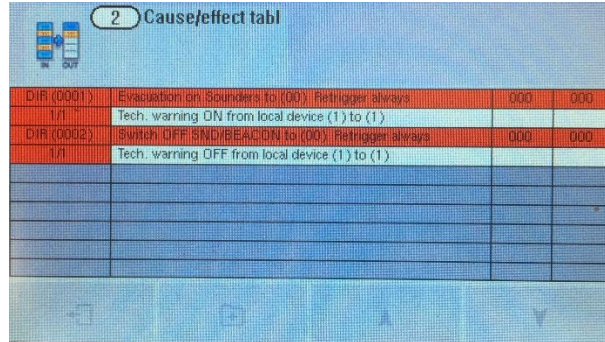
- Select "Local I/O", then "Tech. warning OFF" from the causes. Select Local I/O start & end required, 1 to 1 in this case. Click the triangle symbol to proceed.
- For Output retrigger, select "Always". Click ✓ to accept.



- For the effect, select Panel again.
- Select "Switch OFF SND/BEACON", or "Switch OFF output". Click ✓ to accept.



13. Click on the Door symbol and Click ✓ to accept changes when prompted.



2 Cause/effect tabl			
DIR (0001)	Evacuation on Sounders to (00) Retigger always	000	000
1/1	Tech. warning DN from local device (1) to (1)		
DIR (0002)	Switch OFF SND/BEAC ON to (00) Retigger always	000	000
1/1	Tech. warning OFF from local device (1) to (1)		

NOTES:

There is a brief pause when you exit the Cause & Effect menu, while the Panel configures the changes.

The Panel will indicate each action on screen as a "Test". These can be cleared by logging in at User level and Resetting.

The Evolution Config software cannot be used to program or save cross-network cause and effect. This needs to be done on the control panel and recorded elsewhere.

If you need any further guidance please contact Nittan Technical Support:

Email: dwright@nittan.co.uk
Phone: 01483 541174
Mobile: 07511 047039



David Wright
Technical Support Engineer

