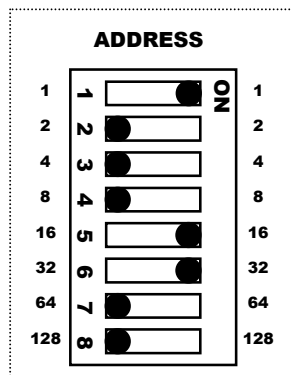


AS-ABS Base Installation instructions

1. Set device address using 8-way DIP switch as detailed below.

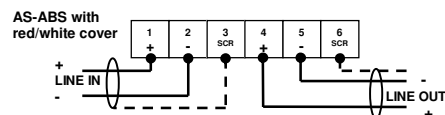


Set the address by adding up the numbers on the left or right side. For example to set address 24, set switch 4 and 5 to the 'ON' position. Switch 4 gives you 8 and setting switch 5 adds 16 which gives the address 24. In the example to the left, the address is set to 49 (1 + 16 + 32).

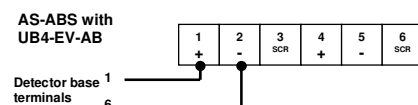
2. Fix base unit to ceiling using 2 x screws through the slots provided.

NOTE: Base Sounder should not be Wall mounted.

3. Connect loop wires to Sounder Base terminal as shown below.



4. Connect Detector Base loop wires to Terminals 1 & 2 as shown below.



5. Select tone and volume options (DIL switch & Pot. Adjust)
DIL switch settings are below – SW1 to SW4.

Tone	SW1	SW2	SW3	SW4	Description	Alert tone
1 Approved	ON	ON	ON	ON	750Hz / 1000Hz alternating 0.5s each freq.	Tone 10
2	OFF	ON	ON	ON	Warble tone, general use. 850-950Hz sweep at 9Hz	Tone 10
3	ON	OFF	ON	ON	Sweep 1s (UK). 800Hz to 970Hz sweep over 1s, repeating	Tone 10
4	OFF	OFF	ON	ON	French fire tone. 440Hz for 400ms, 554Hz for 100ms, repeating	Tone 10
5	ON	ON	OFF	ON	German DIN tone. 1200Hz to 500Hz sweep over 1s, repeating	Tone 10
6	OFF	ON	OFF	ON	Dutch tone 500 Hz to 1200 Hz at 3.5s then 0.5s gap	Tone 10
7	ON	OFF	OFF	ON	Pulsed tone 1s on, 1s off at 750Hz	Tone 10
8	OFF	OFF	OFF	ON	Continuous, 750Hz	Tone 10
9	ON	ON	ON	OFF	Continuous, 1000Hz	Tone 10
10	OFF	ON	ON	OFF	Pulsed tone 1s on, 1s off at 1000Hz	Tone 10
11	ON	OFF	ON	OFF	Alternating at 2250Hz for 0.5s, 3000Hz, for 3s	Tone 10
12	OFF	OFF	ON	OFF	Sweep 9Hz. 2250Hz to 3000Hz, repeating	Tone 10
13	ON	ON	OFF	OFF	Sweep 1Hz. 2250Hz to 3000Hz, repeating	Tone 10
14	OFF	ON	OFF	OFF	Continuous, 3000Hz	Tone 10
15	ON	OFF	OFF	OFF	Pulsed tone 1s on, 1s off at 3000Hz	Tone 10
16	OFF	OFF	OFF	OFF	Silent (no sound)	Tone 10

NOTE: All other Switch settings are NOT approved.
Only Maximum Volume setting is approved.

AS-ABS - Sounder Base.	EN54-3: 2001 - Sounders
	<p>For use with Nittan Sensortec Protocol Only. Loop Voltage: 22 to 28 V d.c. Quiescent Current: 300µA Alarm Current: 4.2mA (Lo) and 7.3mA (Hi) Maximum Power: 200mW Sound output Horizontal 15° to 165°: 72 – 82dB(A)* Sound output Vertical 15° to 165°: 74 – 91dB(A)* * Tone Dependant Volume control: Up to -15dB adjustment</p>
D.o.P. Number: 00498	Technical Data Sheet: TD-AS-ABS
	<p>Nittan Europe Ltd. Tel: +44 (0) 1483 769 555 Hiple Street, Fax: +44 (0) 1483 756 686 Old Woking, Email: sales@nittan.co.uk Surrey, GU22 9LQ Web: www.nittan.co.uk United Kingdom</p>