



NFU Graphic Monitor

Annunciation Monitoring & Control Software



Demo Quick Start Guide



Table of Contents

Installation

Operation

Starting NFU Graphic Monitor	8
Main Display Window	9
Main Functions	10
Navigating the Surveillance Area	11

Configuration

The Configuration Window	15
Placing Devices	18
Troubleshooting / FAQ	19

Ordering Information



Installation

Thank you for downloading NFU Graphic Monitor. Follow these steps to get started.

Hardware Prerequisites

The recommended requirements for NFU Graphic Monitor are:

- Intel® Core™ i7-4790 Processor
- 16 GB RAM 1600 MHz DDR3
- AMD Radeon 2 GB R7 250
- 10/100/1000 Ethernet Port
- Windows 7 Professional, 64 bit

Contact your Nittan representative for the minimum requirements.



Attention: You must be logged in as an administrator to install NFU Graphic Monitor.

If you receive a Program Compatibility Issue click **Run Program**.

To install NFU Graphic Monitor

1. Insert the USB key into the computer.
2. Double-click the **MIR-S-0006-Nittan_NFU-GM_with_prerequisite** icon.
 - If you see a message asking you to install any applications, always install the application.
 - If you see a pop up window with a **Program Compatibility Issue** error message, click **Run Program**.
3. On the first screen, click **Install**.

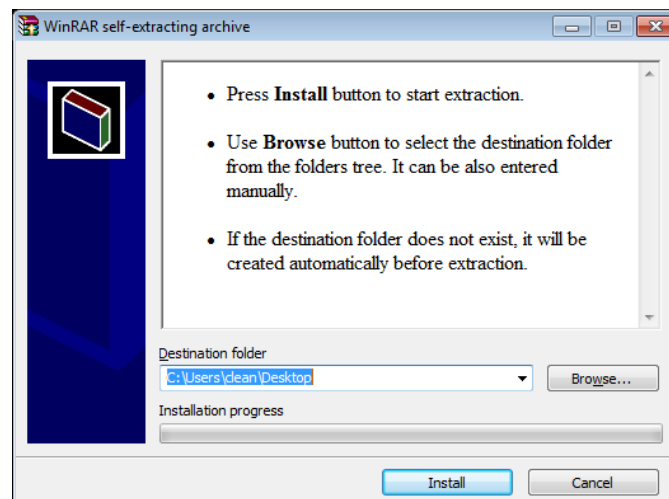


Figure 1 Install screen



The **Welcome** screen appears.

4. Click **Next**.

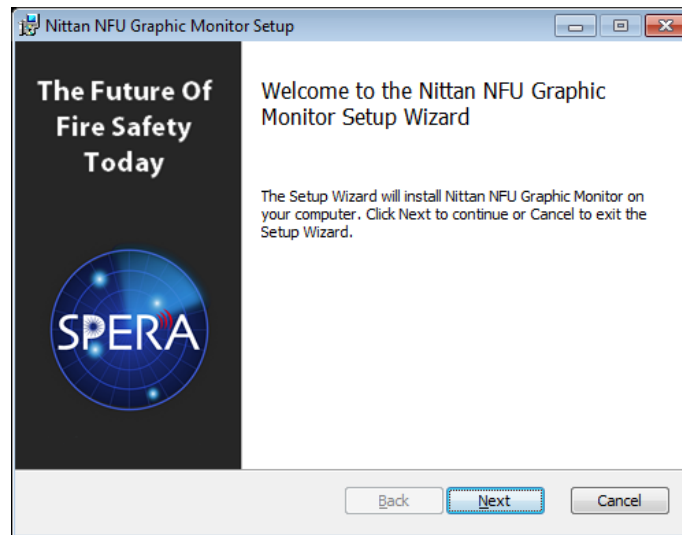


Figure 2 Welcome to the Setup Wizard

5. Select the checkbox to accept the agreement, and then click **Next**.

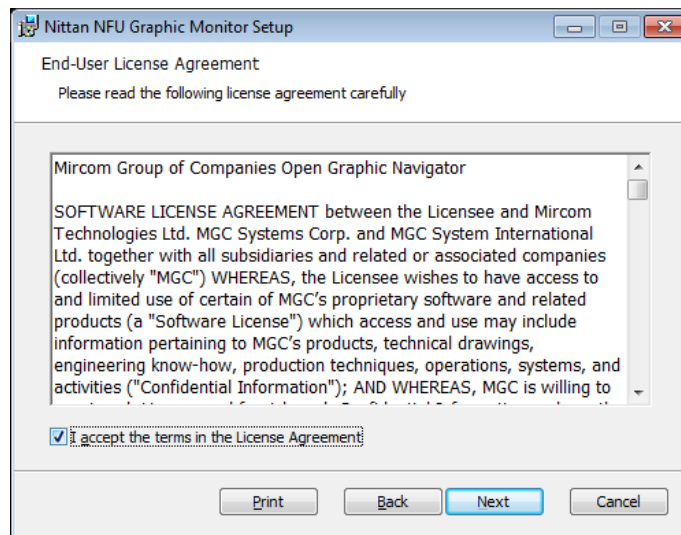


Figure 3 End-User License Agreement

In the Demo Options window, select **Main** and select **Install demo database**. Then click **Next**.

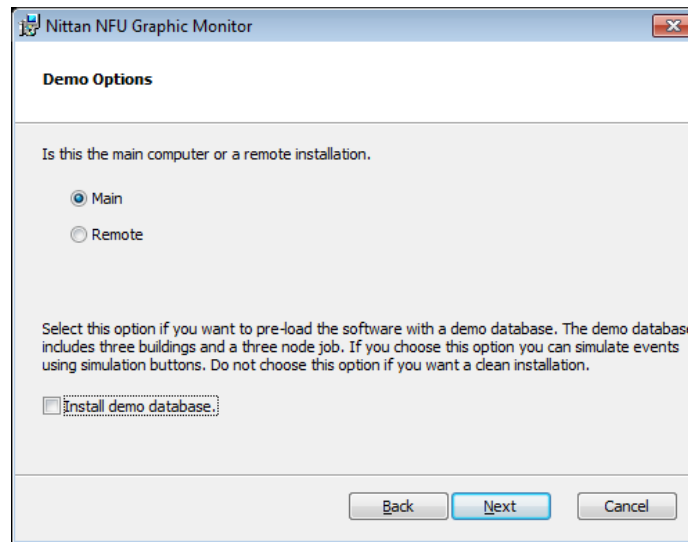


Figure 4 Demo Options

6. In the Choose Setup Type window, click **Typical**.

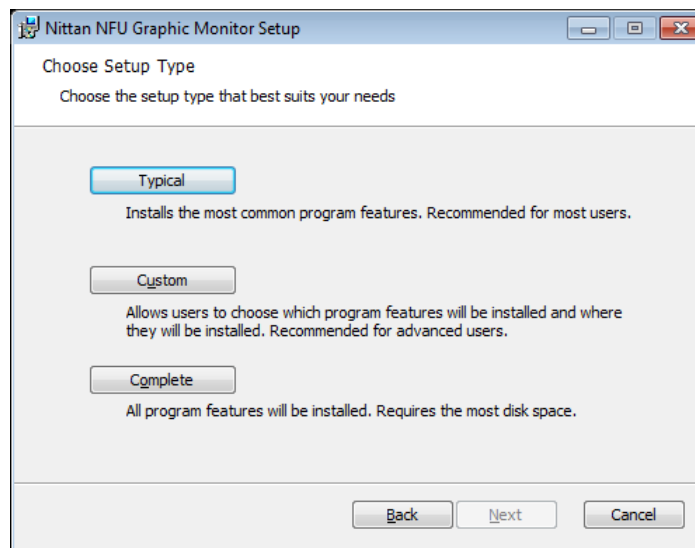


Figure 5 Choose Setup Type



7. Click **Install**.

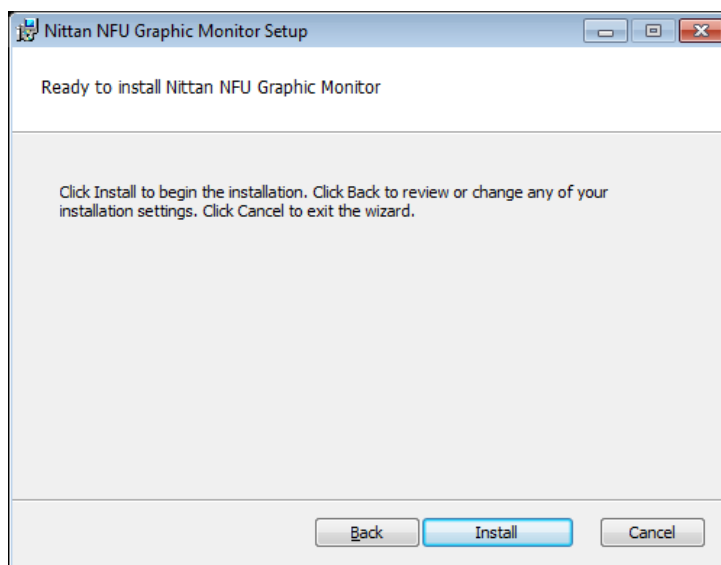


Figure 6 Ready to Install NFU Graphic Monitor

8. Click **Next**.

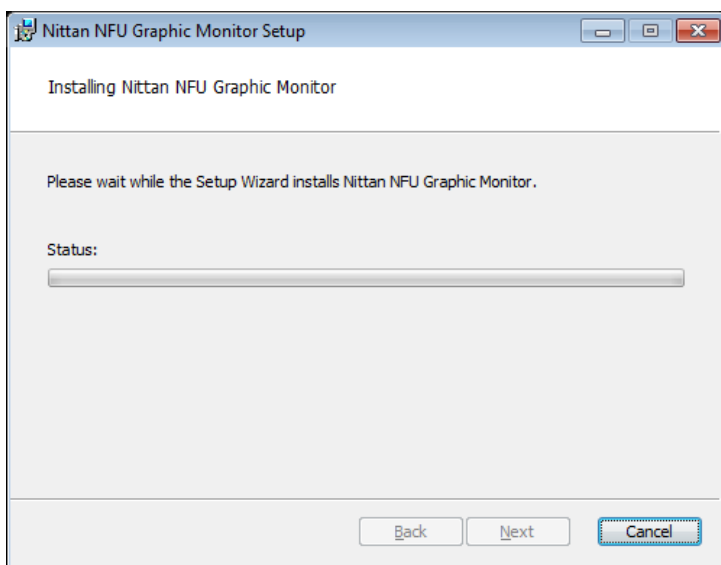


Figure 7 Installing NFU Graphic Monitor



9. Uncheck **Launch Open Graphic Navigator**, and then click **Finish**.

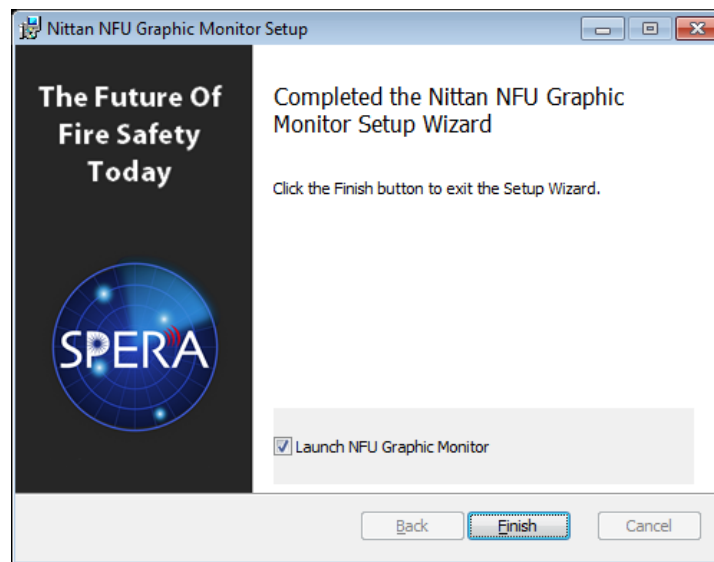


Figure 8 Completed the Setup Wizard



Operation

Starting NFU Graphic Monitor



Attention: Users with CodeMeter USB keys!

Before launching NFU Graphic Monitor insert your CodeMeter USB key into a USB port on the computer that is running NFU Graphic Monitor.

If you do not do this, NFU Graphic Monitor will run in a limited functionality DEMO mode. Additionally, do not remove the USB key while NFU Graphic Monitor is running. Issues arising from doing so will not be supported.

To start NFU Graphic Monitor

- Do one of the following:
 - Double-click the shortcut on your desktop
 - Click **Start > All Programs > Nittan > NFU Graphic Monitor > NFU Graphic Monitor**
 - Browse to the location where the application was installed, and then double-click **NFU Graphic Monitor.exe**.

In Windows 7 64 bit, the default location is
C:\Program Files (x86)\Nittan\NFU Graphic Monitor

In Windows 7 32 bit, the default location is:
C:\Program Files\Nittan\NFU Graphic Monitor

Login to NFU Graphic Monitor

When you start NFU Graphic Monitor, the Login window appears.

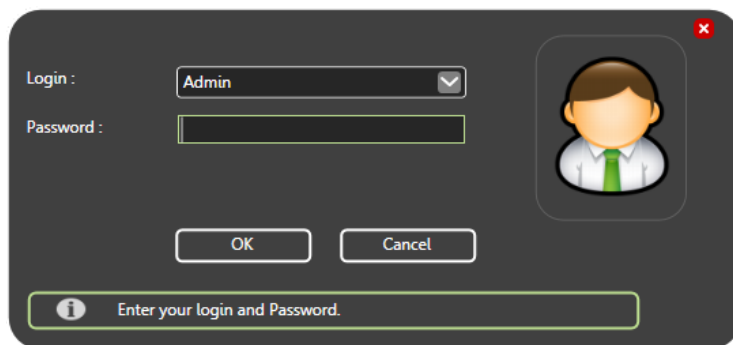


Figure 9 Login Window

To Log in to NFU Graphic Monitor

1. Click a user in the **Login** pulldown menu.
2. Type the password.



Note: If you are starting NFU Graphic Monitor for the first time, no password is required.

3. Click **OK**.

The Main Display screen appears.



Note: You can change your password only after you have logged into NFU Graphic Monitor.



Note: In versions 2.3.5.7 and above, NFU Graphic Monitor locks after 60 seconds of mouse or keyboard inactivity. If NFU Graphic Monitor is locked, you must log into it again.

Main Display Window

After logging in to NFU Graphic Monitor you will see the Main Display window. All networked device information appears in the Surveillance Area, depending on the configuration and viewing mode. The following figure describes the different areas of the Main Display window.

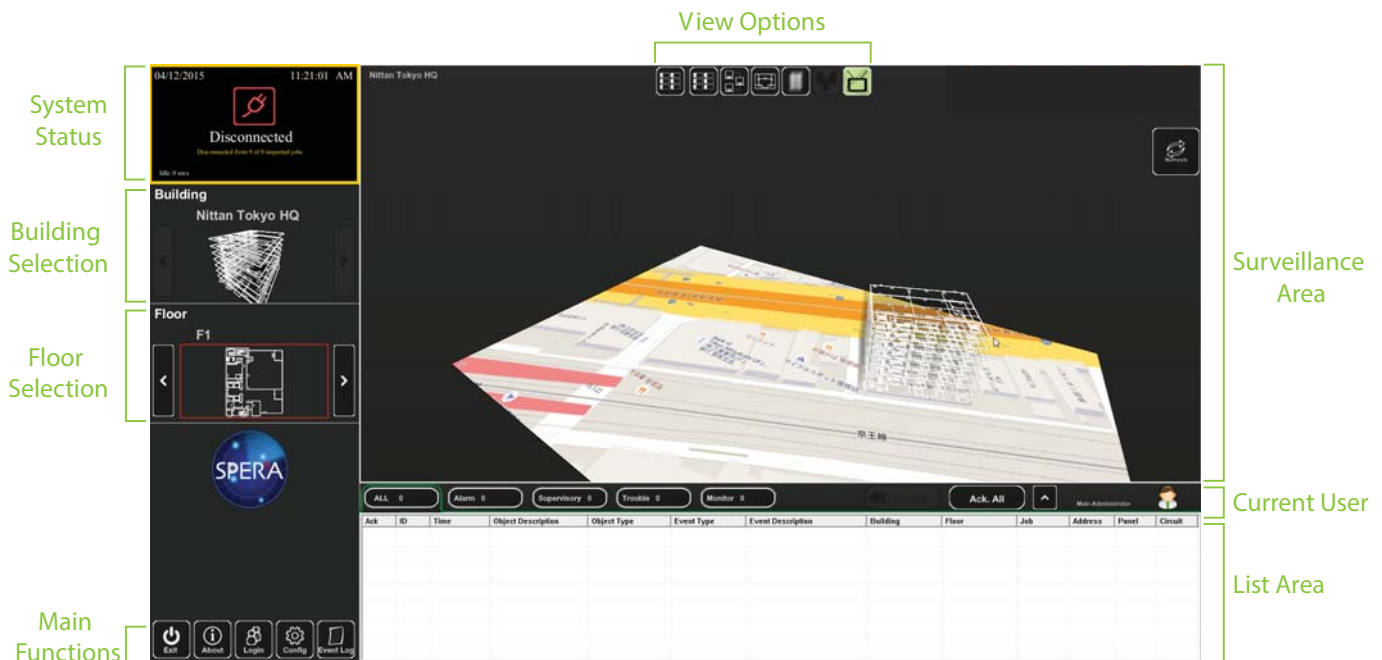







Figure 10 Main Display Screen



System Status	Displays status information such as the connection state and operation progress.
Building Selection	Cycles through the buildings in the campus.
Floor Selection	Cycles through the floors of the selected building, the Control Switches , and the Unplaced Devices .
Main Functions	Contains the Exit , About , Login , Config. and Event Log buttons.
View Options	Changes how the information appears in the Surveillance Area. The options are Switches , Network , 2D View , Building View , Campus View and Auto-watch View .
Surveillance Area	Displays a close-up of the selected building or floor plan.
Current User	Displays the current user.
List Area	Manages all active events.

Main Functions

The following table describes the Main Function buttons located in the bottom left corner of the Main Display window.

Main Function Button	Description
 Exit	Exits NFU Graphic Monitor.
 About	Displays the Version number, License Type, copyright information, CodeMeter stick License Type information, and company contact information.
 Login	Displays the Login window.
 Config.	Displays the Configuration window.
 The Event Log	Displays a printable log report.



Attention: Only users with Technician access or higher can use the Exit and Config buttons.



Navigating the Surveillance Area

The Surveillance Area displays a two or three dimensional view of Buildings and Floors. You establish a view in the Surveillance Area by:

- Selecting a building using the **Building Selection** tool.
- Selecting a floor using the **Floor Selection** tool.
- Selecting one of the **View Options**.

You can navigate the Surveillance Area with the pointer, keyboard or touchscreen.

To navigate the Surveillance Area with a pointer

Drag	Click and drag the building or floor plan in any direction.
Rotate	Right-click as you drag the pointer left or right. (Building/Campus view only)
Tilt	Right-click as you drag the pointer up or down. (Building/Campus view)
Zoom	Depending on your mouse, there are two zoom methods: <ul style="list-style-type: none">• Scroll the wheel up or down.• Click the middle mouse button and move the mouse up and down.
Reset View	Right-click the Surveillance Area, and then select Reset View . (2D View only)

To navigate the Surveillance Area with a keyboard

Drag	Press the arrow keys.
Rotate	Hold down the Shift key and press the left and right arrow keys. (Building/Campus view)
Tilt	Hold down the Shift key and press the up and down arrow keys. (Building/Campus view)
Zoom	Press the + and - keys to zoom in or out.
Reset View	Press the Enter key.

To show the rotation sliders on a touchscreen

- Click **Config. > Settings > Display Settings > Show Rotation Sliders**.

To navigate the Surveillance Area with a touchscreen







Tilt	Press the vertical rotation slider.
Navigate screen	Press the screen and drag your finger up, down, left and right.
Rotate	Press the horizontal rotation slider in the direction you want to rotate.



View Option Buttons

Table 1 describes the six View Option buttons located at the top of the Surveillance Area.

Table 1 View Option button descriptions

View Option Button	Description
 Switches	Displays a visual representation of an annunciator. You can place fire control switches here.
 Network View	Displays a list of all imported jobs.
 2-D View	Displays a 2D representation of the selected floor of the selected building.
 Building View	Displays a 3D representation of the selected Building.
 Campus View	Displays a 3D representation view of all buildings in the selected Campus.
 Auto-watch View	Displays a rotating three dimensional campus view of all the buildings and floors.



Using the List Area

The List Area displays all active events.

To quickly acknowledge the event

1. Check the corresponding box. For more information on managing events see Chapter 6 of the NFU Graphic Monitor Administration Guide.

Event List Sorting Tabs

Action Buttons and Current User

Event List

ALL 4	Alarm 2	Superv. 0	Trouble 2	Monitor 0	Silence	Ack All	Main Administrator						
Adk	ID	Time	Object Description	Object Type	Event Type	Event Description	Building	Floor	Job	Address	Node	Cpu	Loop
<input type="checkbox"/>	1	10:50:49	N/A	Laser Det.	StateChange	ALARM CIRCUITS	Mall	Lobby	Demo	5	2	0	2
<input type="checkbox"/>	2	10:50:50	Total Evacuation	SYSTEM STATUS ...	StateChange	SystemStatus is active	Unplaced	Unplaced	Demo	N/A	-	-	-
<input type="checkbox"/>	3	10:50:49	N/A	1251 Ion Det	Trouble	Missing Device	Condo	Floor 4	Demo	5	1	0	2
<input type="checkbox"/>	4	10:50:50	N/A	1251 Ion Det	Bypass	N/A	Condo	Floor 4	Demo	4	1	0	2

Figure 11 List Area

Event List

Displays a color coded list of active events with the following information:

- Acknowledge
- Event ID
- Event Timestamp
- Device Description
- Device Type
- Event Type
- Event Description
- Building
- Floor
- Job
- Device Address
- Node
- CPU
- Loop

Event List Sorting Tabs

The event list can be sorted to show events of the following types:

- All
- Alarm
- Supervisory
- Trouble
- Monitor





Action Buttons and Current User

Contains the **Silence\Unsilence**, **Acknowledge All**, **Expand\Collapse List** buttons, and displays the Current User.



Action Buttons

Table 2 Action Buttons

Action Buttons	Description
 Acknowledge All	Acknowledges all events under the selected sorting tab. The alarm tone from the computer stops.
 Silence	Silences the alarm tone, if there is an alarm tone. This silences only the alarm on NFU Graphic Monitor, not the alarm on the Fire Alarm Control Panel.
 Unsilence	Makes the alarm tone audible, if it was previously silenced.
 Expand\Collapse List	Expands or collapses the List Area.

Login Window

The Login window lets you switch users or change the password of the current user.

To access the Login window after NFU Graphic Monitor has started

- Click the **Login** button in the Main Functions area of the Main Display window (in the lower left corner of your screen).

To change the current user

- Select the user from the pulldown menu.
- Type the password.
- Click **OK**.

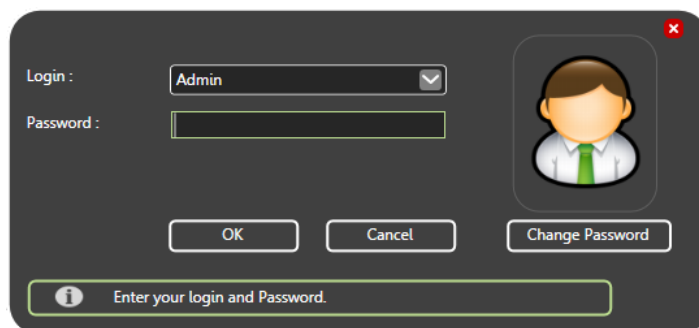


Figure 12 Login Window



Configuration

The Configuration Window

The Configuration window is the area where you set up your buildings and floor plans.

To access the Configuration window

1. Click the **Config** button in the Main Display window.
2. Click **OK**.

In the Configuration window, there are two different views available: the 2D view of the floors and the Campus view. By default, the Configuration window displays the 2D view of the selected Floor and Building.

2D View

In the 2D view, you can place objects by dragging them from the Job Tree to the Surveillance Area. For more information see Chapter 5.0 Configuring Objects and Zones.

Campus View

You can move, rotate, or rescale the Campus View buildings. Use this view to adjust the placement and layout of the buildings that are networked together in your fire protection system.

To...	Do this...
Reposition buildings	Click and drag
Enlarge or shrink a building	Mouse over a building and use the mouse scroll wheel
Rotate a building	Click and drag the corner of the building

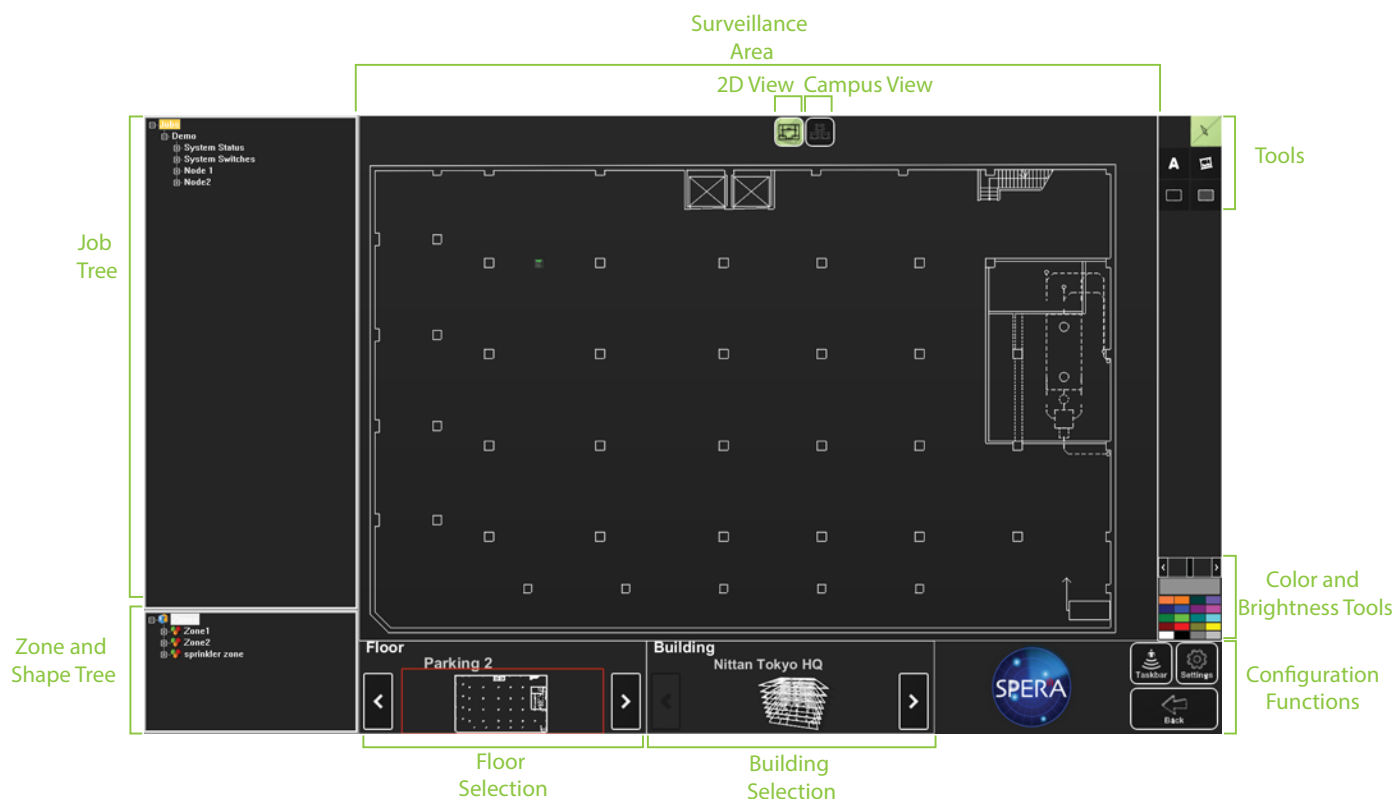


Figure 13 Configuration Window

The Configuration window has the following parts:




Job Tree	Shows all devices appear in the Job Tree in the following hierarchy: Job > Node > CPU > Loop > Object.
Zone and Shape Tree	Lists all zones and the shapes assigned by zone. Unassigned shapes are listed in the unassigned tree.
Floor Selection	Cycles through the floors of the selected building. The first floor in the list shows all unplaced objects.
Building Selection	Cycles through the buildings in the campus.
Surveillance Area	Displays the requested information from the Building Selection , Floor Selection in 2D View. Only 2D navigation functions are available on the Configuration window Surveillance Area.
Tools	Contains the Selection , Text , Icon , Filled Rectangle and Empty Rectangle buttons.
Color and Brightness Tools	Changes the color of a building or zone. The currently selected color is shown in the large box immediately above the group of colors. Use the slider bar to change the brightness and opacity.
Configuration Functions	Contains the Taskbar , Settings , and Back buttons. For more information see Table 3.



Configuration Function Buttons

The Configuration Function buttons are located in the bottom right hand corner of the Configuration window.

Table 3 Configuration Function button descriptions

Configuration Function Button	Description
 Taskbar	Shows the Windows taskbar.
 Settings	Configures the following settings: <ul style="list-style-type: none">• Panel Settings• Campus Settings• Display Settings• Icon Settings• Object Type Settings• Event Log Settings• E-mail Notification Settings• Database Settings• Connection Settings• Users Settings For more information on configuring NFU Graphic Monitor, see Chapter 4 of the Administration Guide.
 Back	Takes you back to the Main Display window.

Tools

The Tool buttons are located in the top right corner of the Configuration window.

Table 4 Tool button descriptions






Tool Button	Description
 Selection	Selects items in the Surveillance Area.
 Text	Places new text or edits existing text in the Surveillance Area. You can change the color of the text by clicking the desired color in the Color and Brightness Tools section.
 Add Image	Imports and places an image in the Surveillance Area.

Table 4 Tool button descriptions (Continued)

Tool Button	Description
 Empty Rectangle	Lets you draw an empty rectangle that you can assign to a new or existing zone. You can change the color of the rectangle by clicking the desired color in the Color and Brightness Tools section.
 Filled Rectangle	Lets you draw a filled rectangle that can you can assign to a new or existing zone. You can change the color of the rectangle by clicking the desired color in the Color and Brightness Tools section.

The following list identifies what features are disabled in the Nittan NFU Graphic Monitor demo.

Panel Settings	Delete a job	Disabled for demo
	Import XML	Disabled for demo
Database Setting	Backup	Disabled for demo
	Restore	Disabled for demo
Email Notification	Email Notification	Disabled for demo

Placing Devices

You can define individual devices or groups of devices and their placement on the map.

- Right click on a device, loop or CPU to see the following menu:

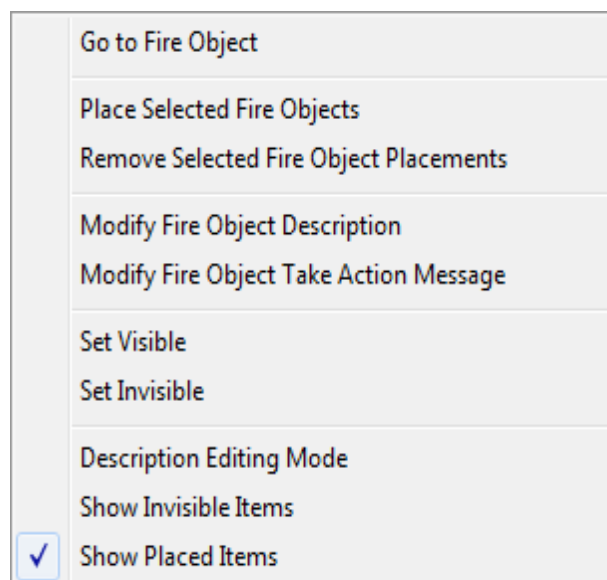


Figure 14 Fire Object Options



Go to Fire Object	Finds a placed or unplaced object.
Place selected Fire Objects	Adds an object to the floor plan. Unplaced objects are red in the job tree, and placed objects are green.
Remove selected Fire Object placements	Removes any object from the floor plan.
Modify Fire Object Description	Modifies the description.
Modify Fire Object Take Action Message	Modifies the Take Action message. This message describes the actions you need to take when an event occurs.
Set Visible	Makes invisible objects visible.
Set Invisible	Makes the object invisible.
Description Editing Mode	Lets you rename multiple objects at once.
Show Invisible Items	Shows all the invisible objects in the Job Tree. Invisible objects are grey in the Job Tree.
Show Placed Items	Reserved for future use.

Troubleshooting / FAQ

Q: How do I resynchronize NFU Graphic Monitor if the system goes down?

A: If the panel goes down or if NFU Graphic Monitor quits unexpectedly, follow these instructions.

1. Close NFU Graphic Monitor if it is open.
2. Close the XML Adapter.
3. Wait for 1 minute.
4. Restart the XML Adapter.
5. Restart NFU Graphic Monitor.
6. Perform a network restart on the panel.

NFU Graphic Monitor should reconnect to the panel and receive any events that the panel sent while NFU Graphic Monitor was down.

Q: Why is the text on the screen jumbled?

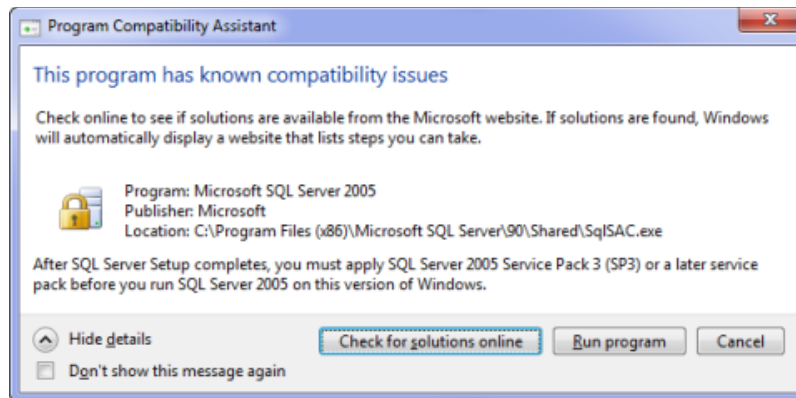
A: This is a known issue with some Intel graphics cards. Update your drivers to solve this issue.

Q: Why does my installation fail and I receive this message?

Unable to satisfy all prerequisites for Nittan NFU Graphic Monitor. Setup cannot continue until all system components have been successfully installed.

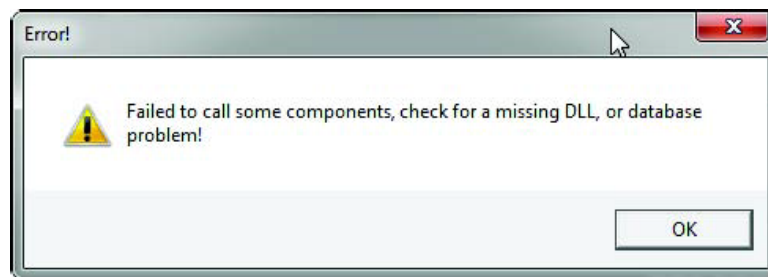
A: Click the **Details** button. If you see the message **Administrator permissions are required**, install the application using a user profile that has Administrator rights.

Q: When installing NFU Graphic Monitor, why do I receive this or a similar message?



A: You are running Windows 7. Click **Run**

Q: When I attempt to run NFU Graphic Monitor why do I receive the following message?



A: You are running NFU Graphic Monitor in a Vista or Windows 7 environment. You must ensure that you are running NFU Graphic Monitor with Administrator rights.

Q: Why is NFU Graphic Monitor telling me that I only have a Demo version when I have purchased a licensed version?

A: Ensure that your Codemeter USB key has been programmed and is connected to the computer running NFU Graphic Monitor.



Ordering Information

We hope you enjoyed using the demo version of NFU Graphic Monitor. If you are interested in acquiring a licensed version of NFU Graphic Monitor please contact sales representative in your area by visiting <http://www.nittan.com>.

The types of licenses available are as follows:

Table 5 Licenses Types and Supported Features

License Type (Order #)	Number of Networks / Adapter Connections	Number of Objects / Points
Demo (OPENG-N-DEMO)	0	n/a
Mini (OPENG-N-MINI)	1	2000
Enterprise (OPENG-N-ENT)	1	10000
Control (OPENG-N-CTRL)	1	10000
Network (OPENG-N-NETW) Requires Mini, Enterprise and/or Control licenses	up to 10	n/a

For more information on NFU Graphic Monitor visit <http://www.nittan.com>.

